



**CAN WE TAKE ON
THE FLU, AS SOON AS
THE FLU TAKES ON YOU?**

FEVER? ACHES? PAINS? COUGH? SORE THROAT?

When you reach for the tissues this flu season, think CAPSTONE-2. The CAPSTONE-2 clinical research study will try to find out if an investigational flu drug can speed up the recovery of people with flu who are at risk of developing further complications.

The study drug is available at no cost to you. You do not need health insurance, and compensation for time or travel may be provided.

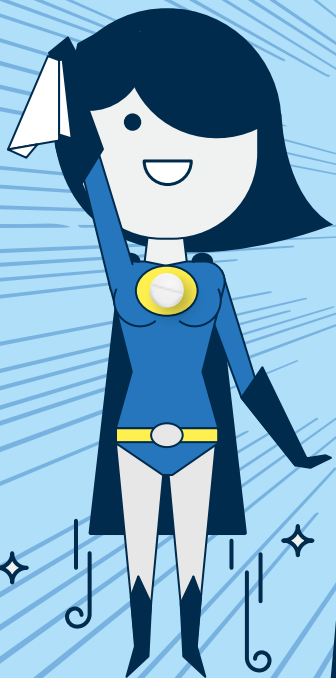
To take part, participants must:

- ✦ Have had flu symptoms (such as fever, aches, pains, cough, sore throat) for less than 48 hours
- ✦ Be at least 12 years old
- ✦ Be at risk of developing further complications (for example, those with another health condition and those over the age of 65)

Because participants need to enroll in the study within 48 hours of becoming ill, it's important to get in touch with the study team as soon as possible after symptoms appear.

***IF YOU THINK YOU/YOUR CHILD
MAY BE SUITABLE, PLEASE CONTACT:***

TAKEONFLU.COM



**AHHH
CHOOO!**

**CAN WE TAKE ON
THE FLU, AS SOON AS
THE FLU TAKES ON YOU?**

FEVER? ACHES? PAINS? COUGH? SORE THROAT?

When you reach for the tissues this flu season, think CAPSTONE-2. The CAPSTONE-2 clinical research study will try to find out if an investigational flu drug can speed up the recovery of people with flu who are at risk of developing further complications.

The study drug is available at no cost to you. You do not need health insurance, and compensation for time or travel may be provided.

To take part, participants must:

- ✦ Have had flu symptoms (such as fever, aches, pains, cough, sore throat) for less than 48 hours
- ✦ Be at least 12 years old
- ✦ Be at risk of developing further complications (for example, those with another health condition and those over the age of 65)

Because participants need to enroll in the study within 48 hours of becoming ill, it's important to get in touch with the study team as soon as possible after symptoms appear.

***IF YOU THINK YOU/YOUR CHILD
MAY BE SUITABLE, PLEASE CONTACT:***

TAKEONFLU.COM